

SoundCheck Installation manual

Version 9.07
Released April 2013.

Contents.

Supported platforms.	3
Download the software.	3
Installing the software.	4
Install the Soundcheck serial port driver.....	6
Connect to the flowmeter.....	10
When it does not connect.....	11
When connection with the flowmeter using <i>Scan automatic</i> is not working.....	11
Which comport has been assigned by windows ?	12
Manually change the assigned comport number.	14
Release 'In Use Comports'	16

Supported platforms.

This SoundCheck supports the windows platforms:

- W2000
- XP
- Windows7

The SoundCheck support most of the ultrasonic electronics :

- UFM3030
- UFM530 HT
- ALTOSONICIII
- ALTOSONICV
- OPTISONIC 6300/P
- OPTISONIC 3400

Download the software.

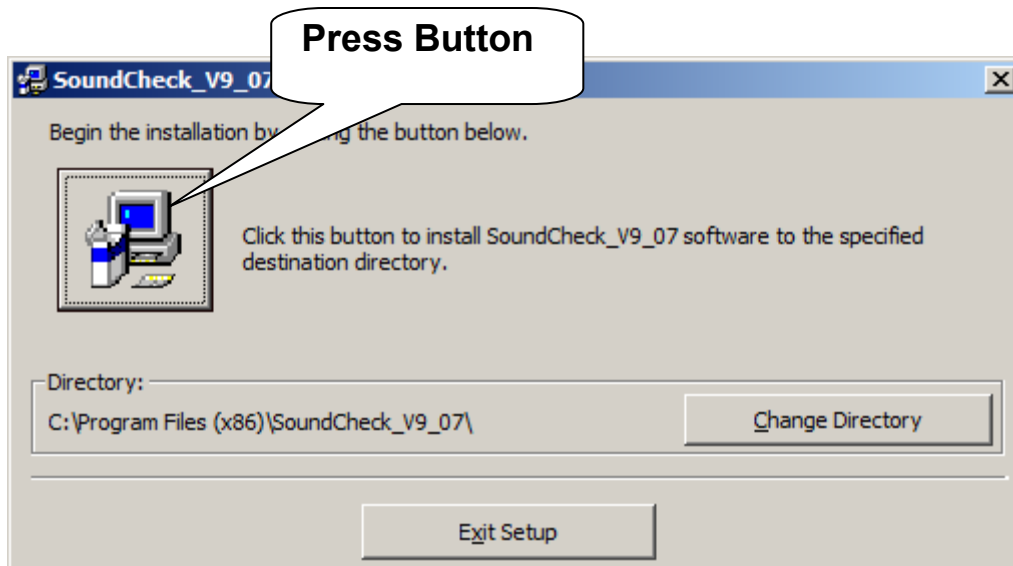
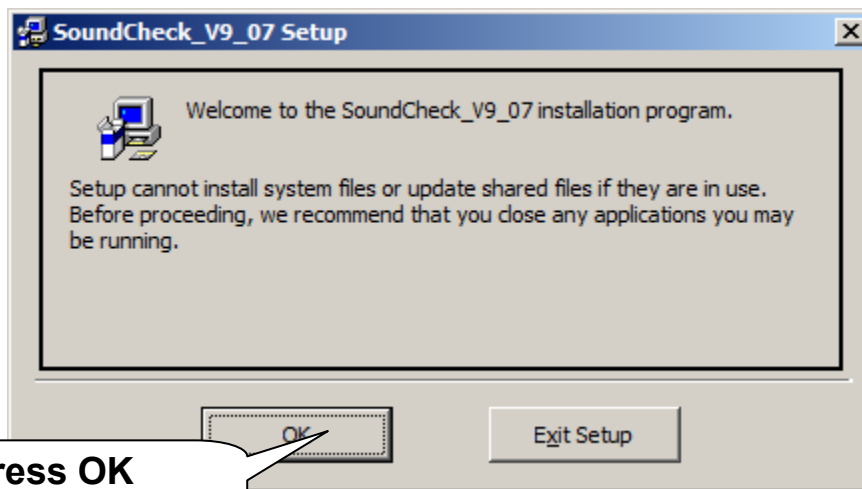
Download the .zip with the installer from <http://www.krohne.com/> (under the *downloads* -> software section).

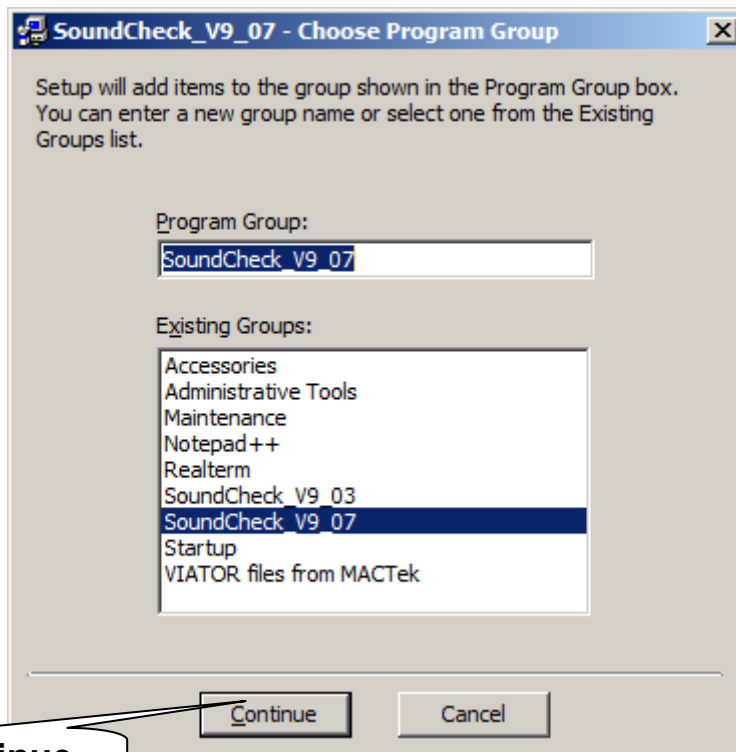
Install the software.

The .zip file contains 3 files :

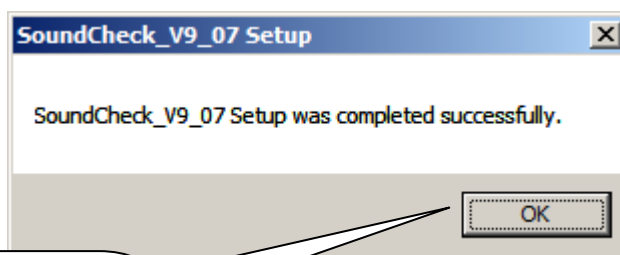
- setup.exe
- setup.lst
- SoundCheckVxxx.cab

Unzip the downloaded file and run setup.exe





Press Continue



**Press OK
to finish
installation**

Install the Soundcheck serial port driver.

The used USB to SERIAL port chipset is PROLIFIC (2303HX).

Drivers needs to be installed to communicate with the SoundCheck adapter.

This is a widely used chipset, so it might already been installed by another program.

The latest drivers are available from <http://www.prolific.com.tw> but are also distributed with the SoundCheck installer.

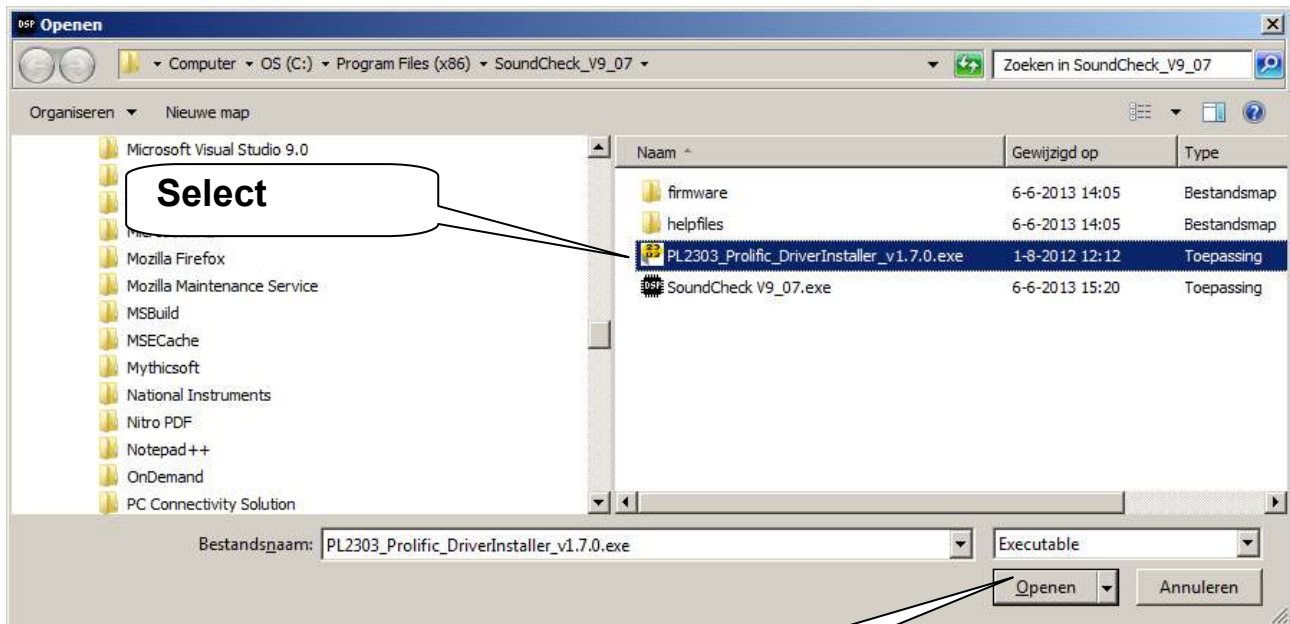
The location of the driver installer (if default directories where used) is :

..\Program Files (x86)\SoundCheck_V9_07\PL2303_Prolific_DriverInstaller_Vx.x.x.exe.

Run the installer using Windows Explorer or the *Soundcheck menu*: *File -> Execute option* (see figure):

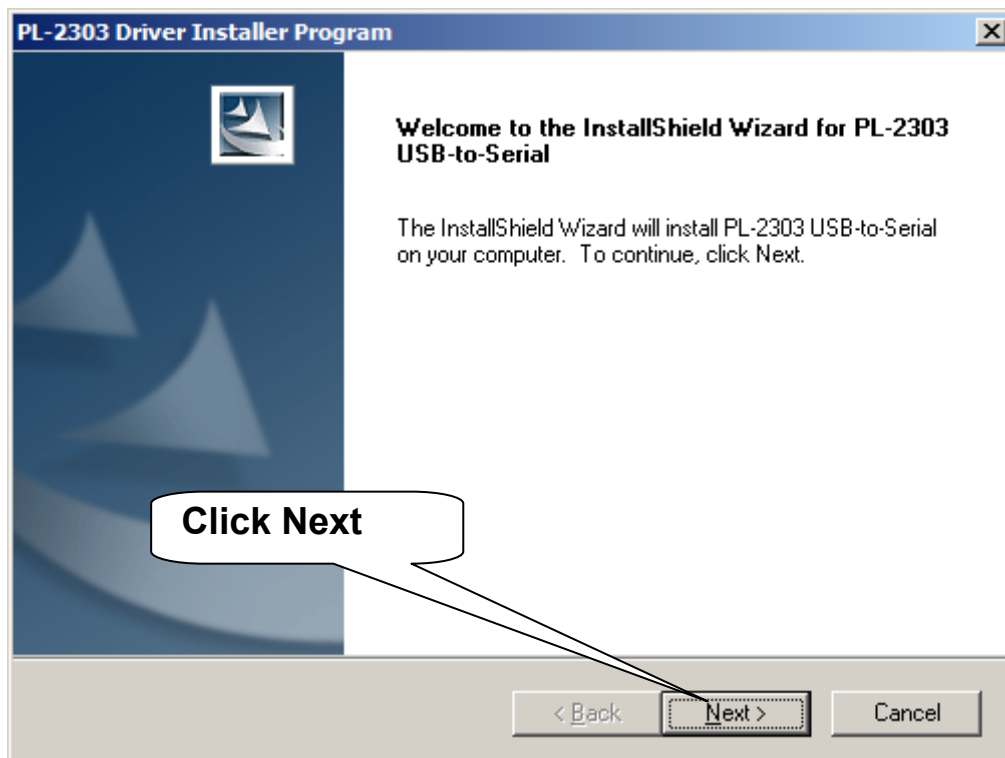


Select the installer program.



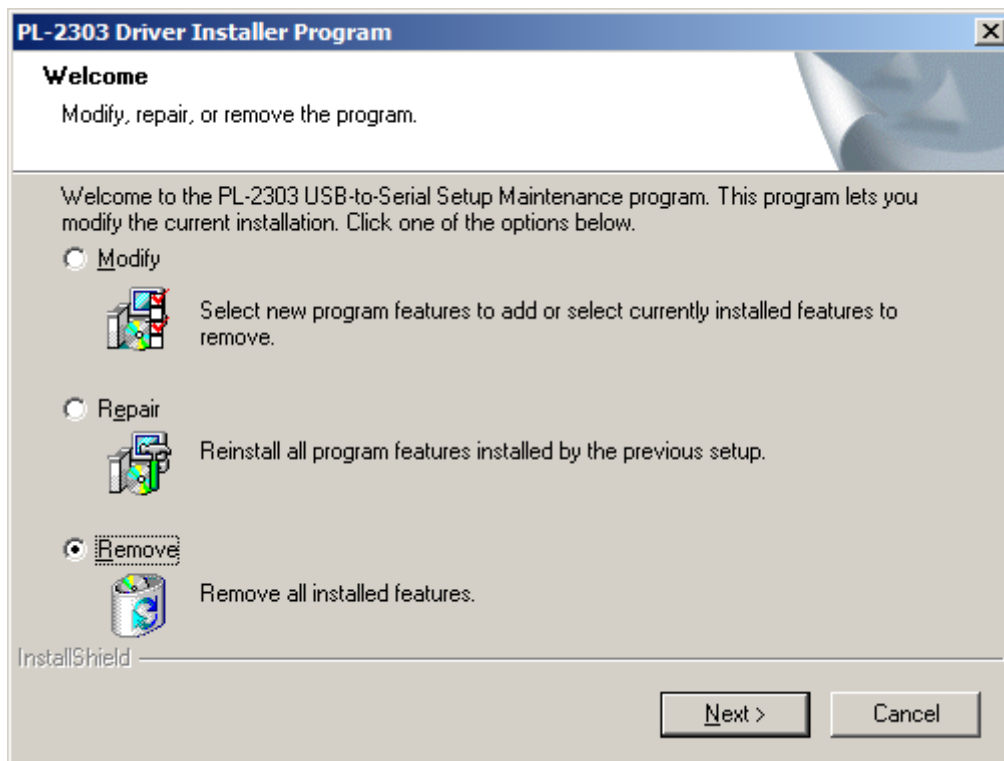
Press Open to start installation

The PL2303 driver installer welcome screen is shown.



WARNING !

If the drivers are already installed a Modify,Repair,Remove window will showup instead of the welcome screen.

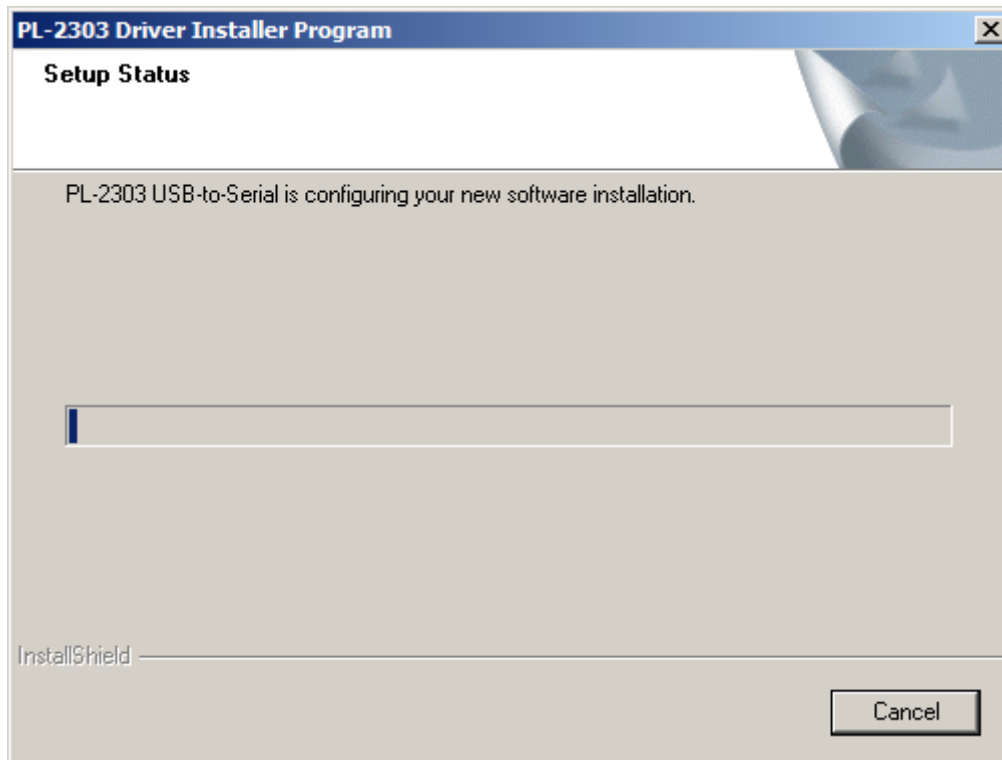


Then, cancel the installation and use the already installed drivers.

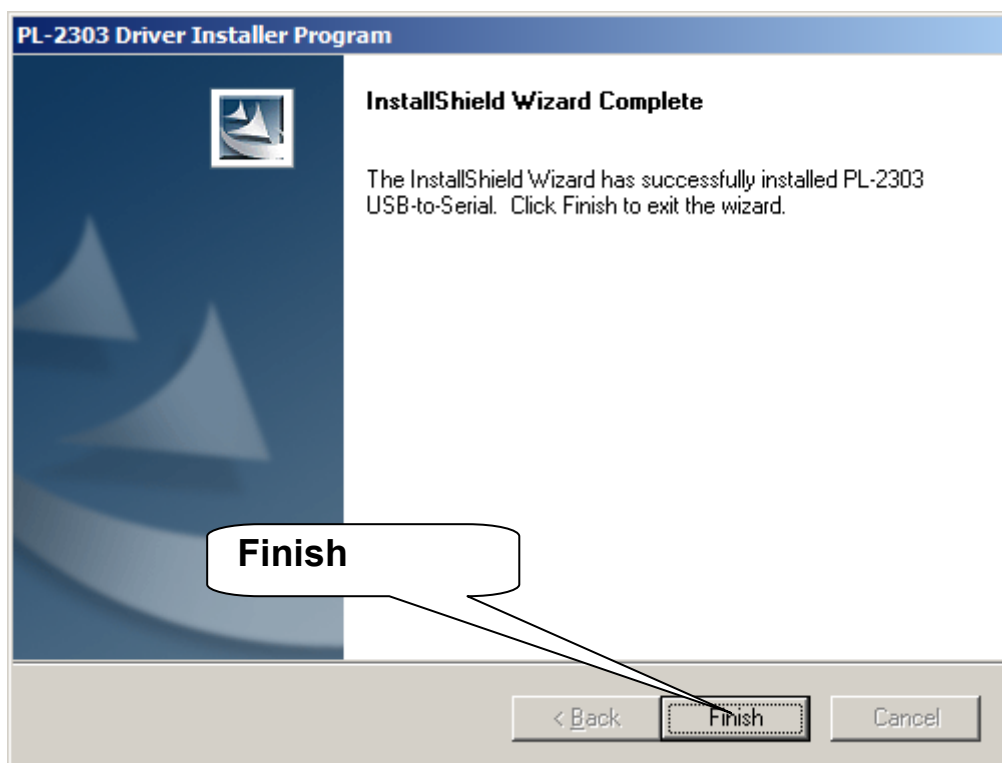
If soundcheck communication fails, read further at the '*when the SoundCheck adapter is not found*' section.

If the driver is not installed correctly remove and re-install the driver again.

After click NEXT at the welcome screen the installation will start.



And close after completion.....



Connect to the flowmeter.

Connect the SoundCheck adapter to the PC and the Flowmeter.
Wait until the driver is found and installed.

Now connect to the flowmeter:



If successfully connected the used COMPORT is shown and the version of the Digital Signal Processing software is shown.



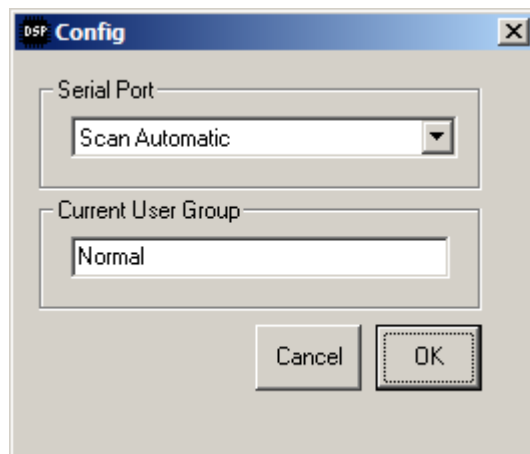
When it does not connect....

When connection with the flowmeter using *Scan automatic* is not working.

Make sure the electronics is powered, the SoundCheck adapter is connected to the flowmeter and the PC.

The SoundCheck program can use the SoundCheck adapter on serial comports 1 to 16.

Using the 'Scan Automatic' mode it is not necessary to know which comport windows has assigned to the SoundCheck adapter, this is a nice when using different USB ports during field trips.



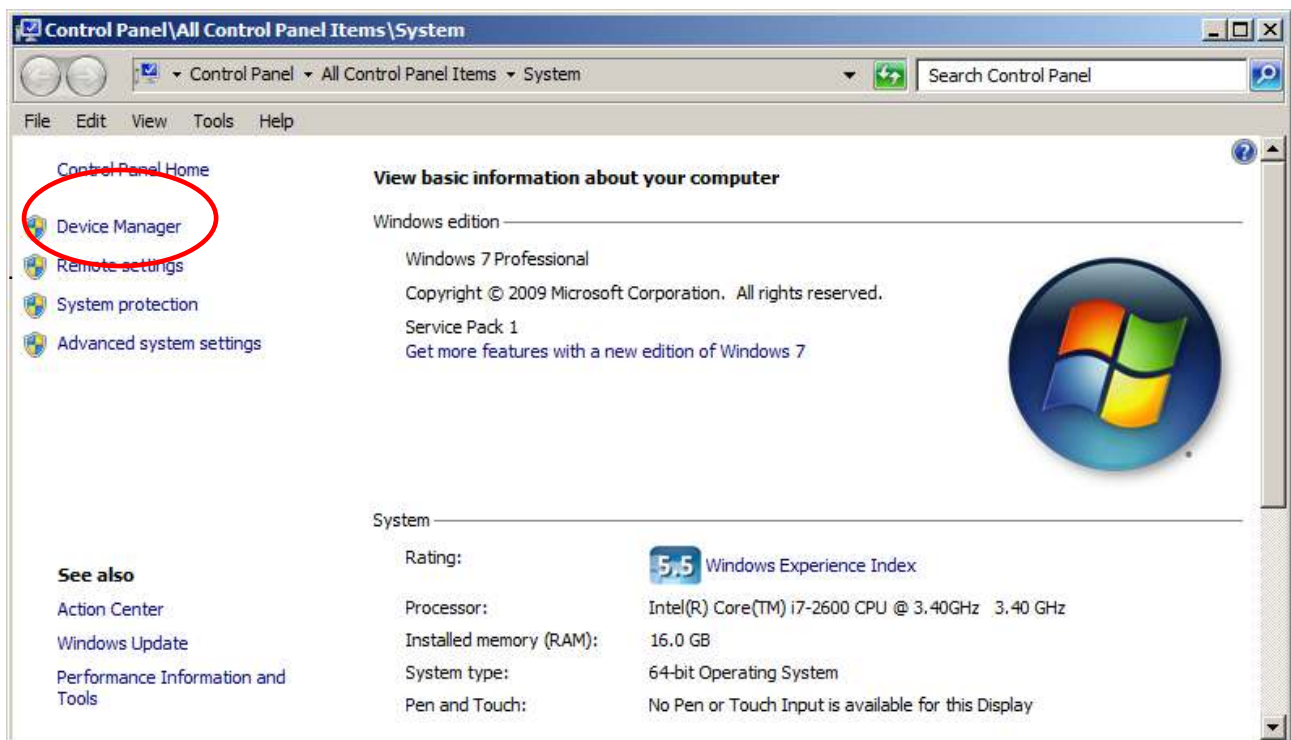
However, it may occur that all comports 1 to 16 are 'In Use', even without a device attached. The SoundCheck adapter will then be assigned at a comport number higher than 16 and it will not be found.

See the next chapters to handle this issue.

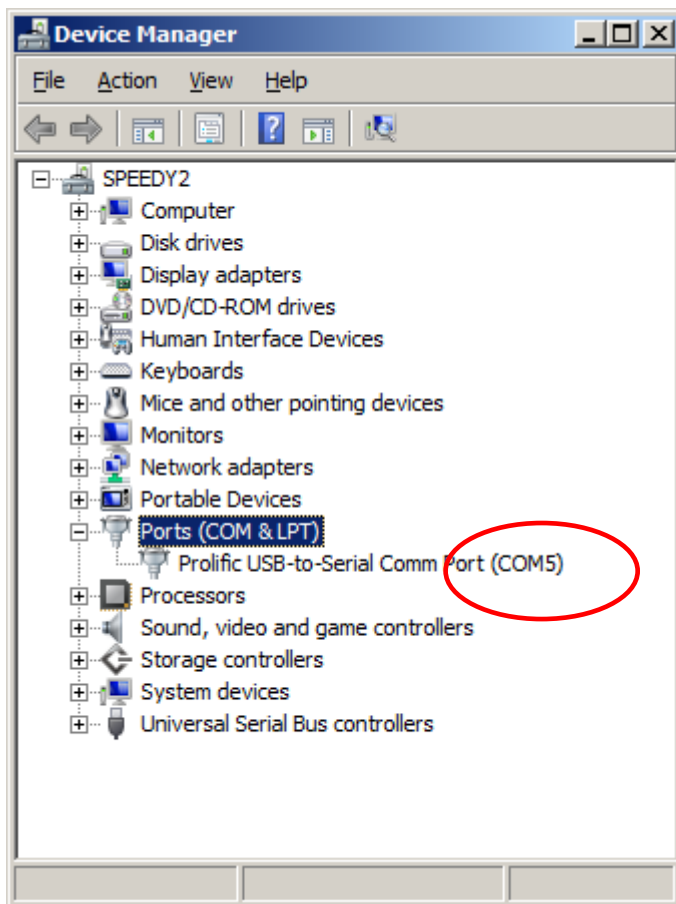
Which comport has been assigned by windows ?

If the soundcheck is attached to the PC the assigned comport can be checked.

Start -> Control Panel -> System -> Device Manager..



Expand the Ports item :



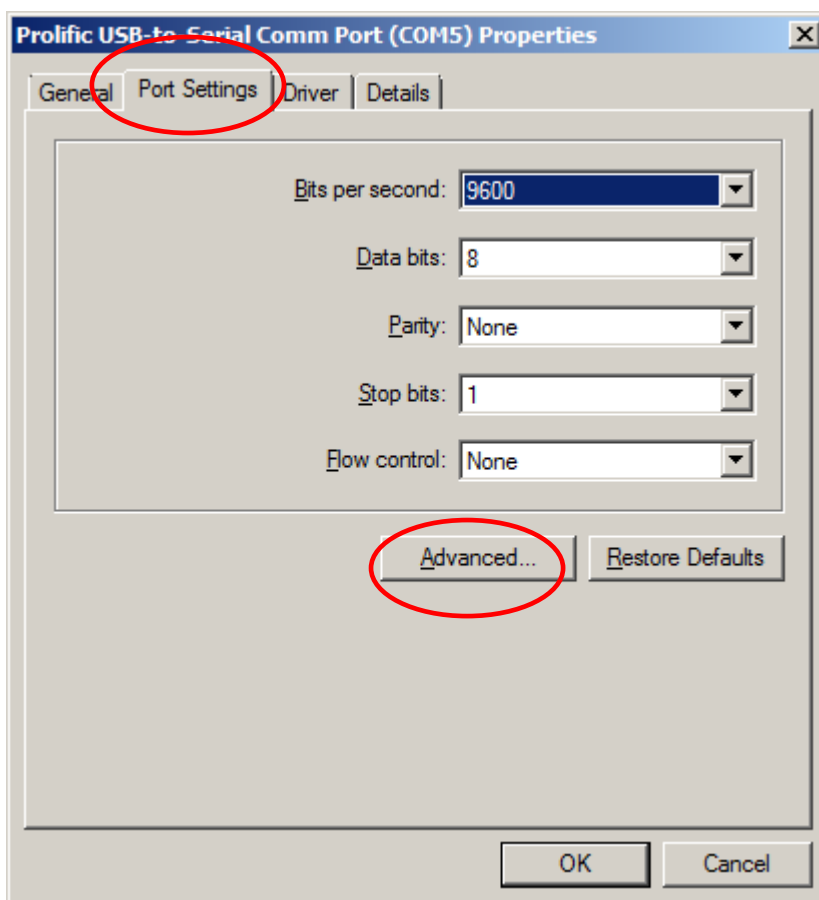
So, the prolific adapter has been assigned to COM5.

Manually change the assigned comport number.

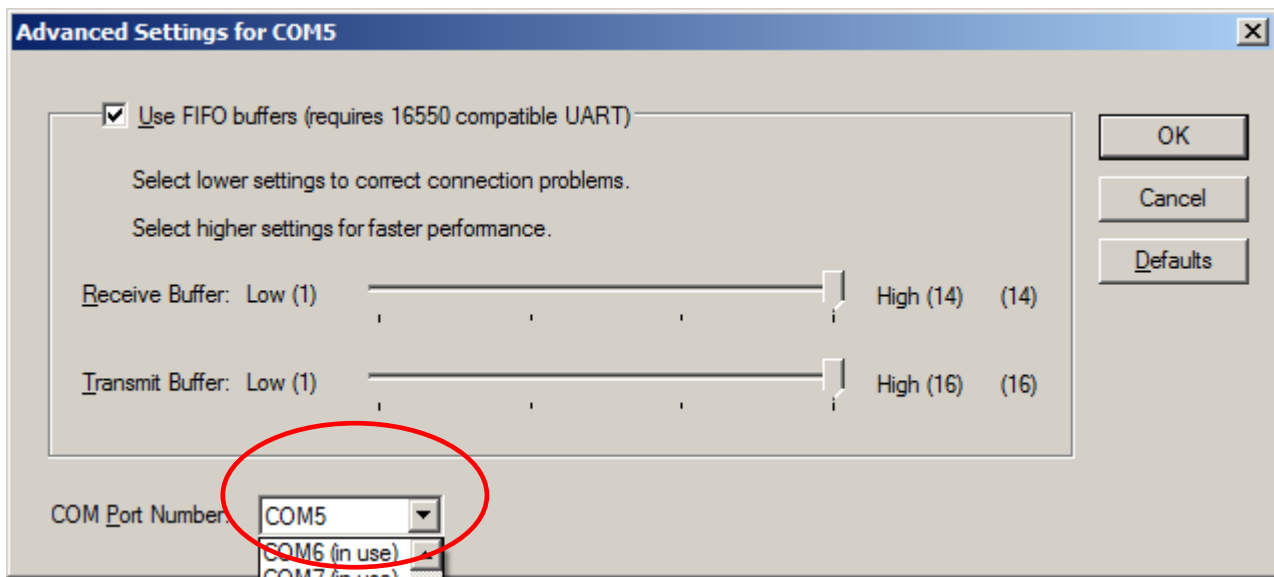
If the assigned comport number is larger than 16 the Soundcheck program can not use it.
Manually assign a lower comport number.

Right Click on the comport and select properties.

Select on the Port Settings Tab the Advanced button:



Now manually assign a number :



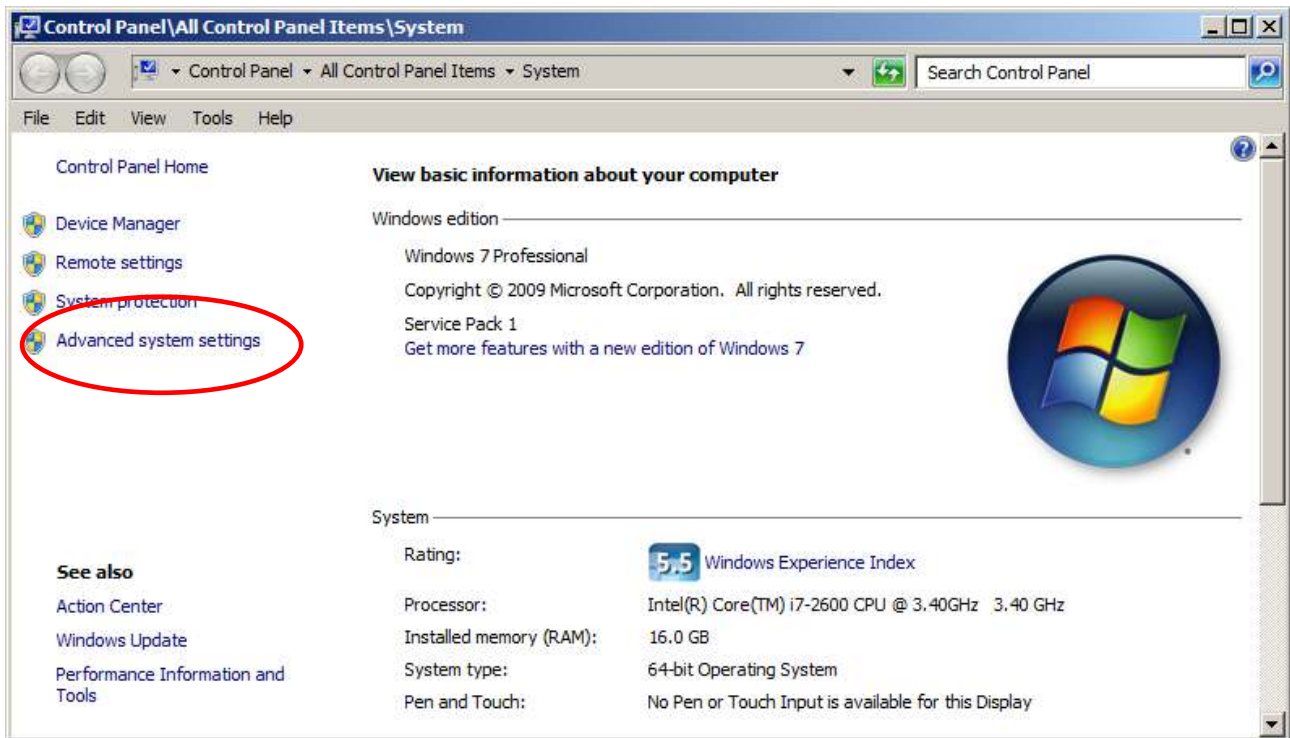
If all COM Port Numbers are "(in use)" and there is no real hardware attached to the computer, go to the Release 'In Use Comports' section.

Release 'In Use Comports'

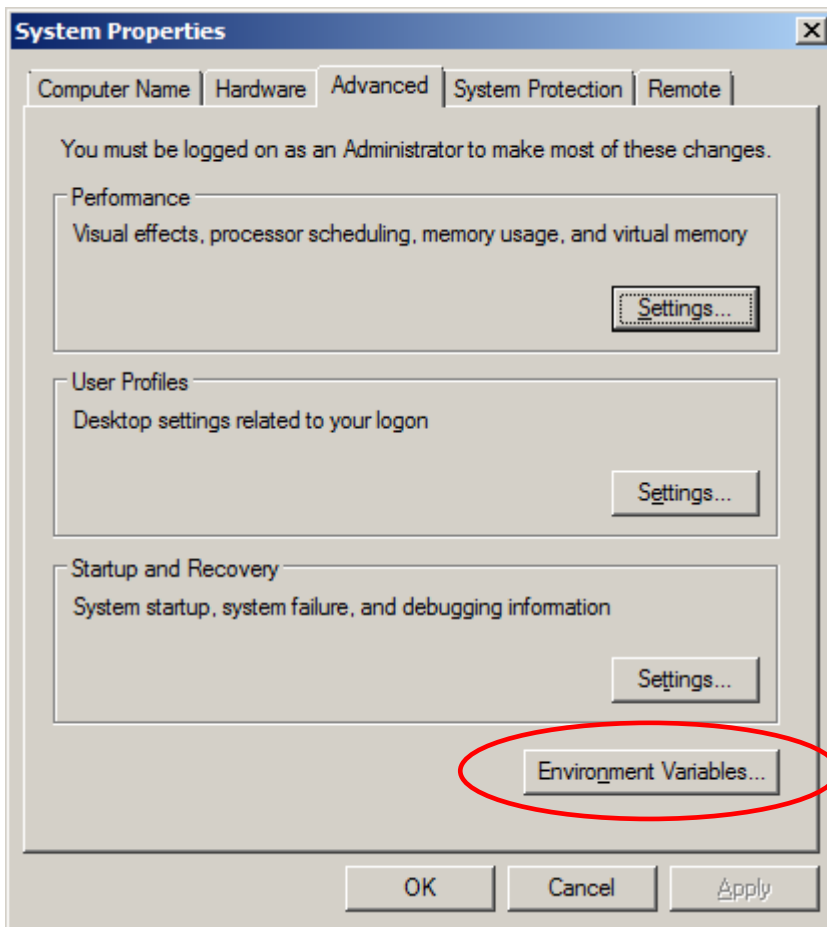
To remove the "in use" comports (which are not really attached anymore) they first must be made visible.

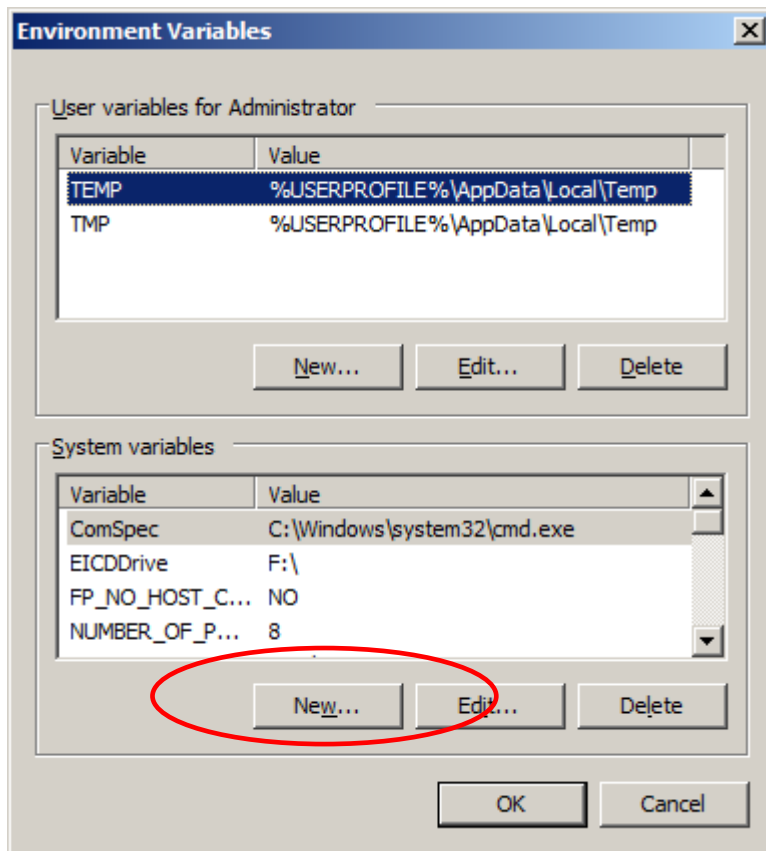
To do this an environment variable has to be set first.

Start -> Control Panel -> System -> Advanced system settings.



Then open the Environment Variables window :

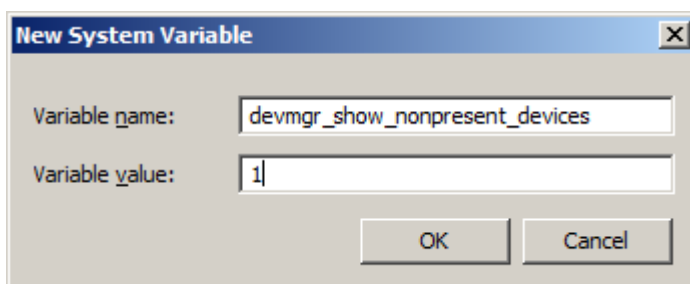




Press New and fill the values:

Variable name : *devmgr_show_nonpresent_devices*

Variable value : 1

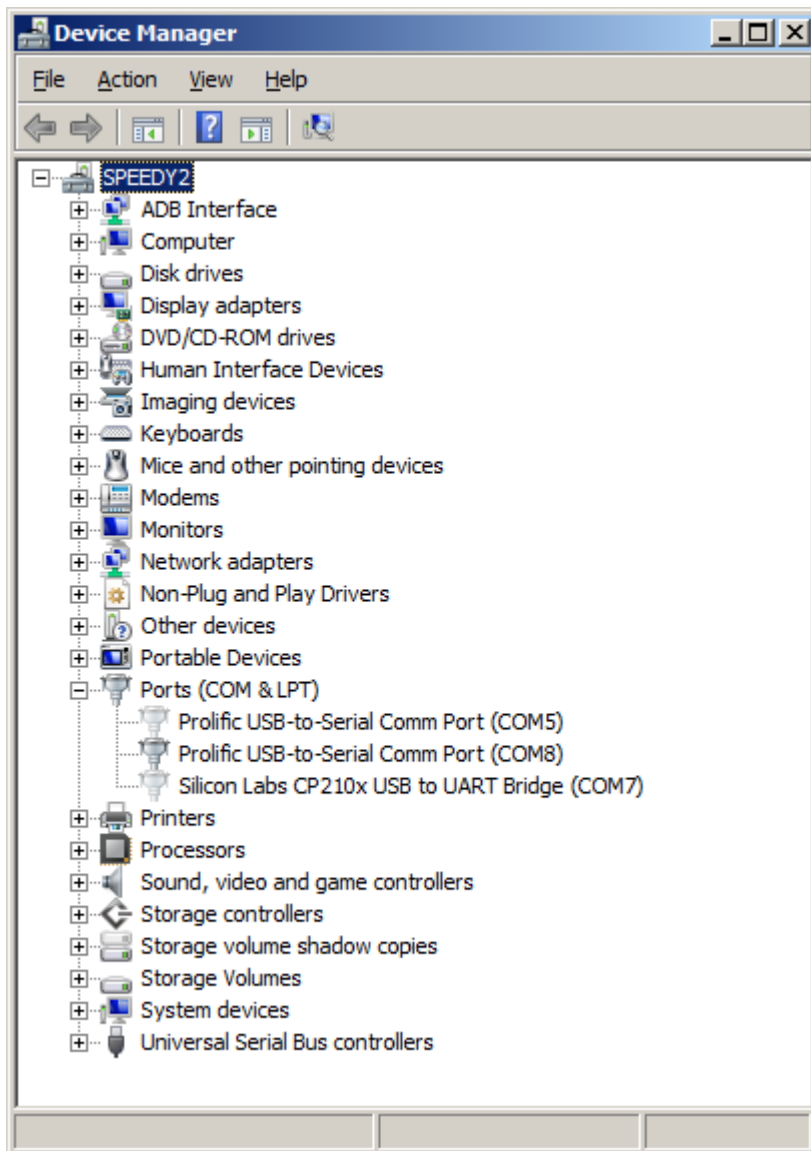


Leave the Configuration screens (OK,OK,OK).

Now as explained earlier go to the Device Manager and select:
View -> Show Hidden Devices.

The highlighted ports are actually attached to the computer, the non highlighted are not.
If Comports appear (in use), remove them (using delete or right-mouse-button->uninstall).

Note: next time if a removed "in use" Comport will be attached, the driver will be reloaded again and a new comport number will be assigned.



With this method "in use" ports in a range of 3..16 can be set free for re-use.
Notice that COM1 and COM2 are usually available on the main board and should not be removed.